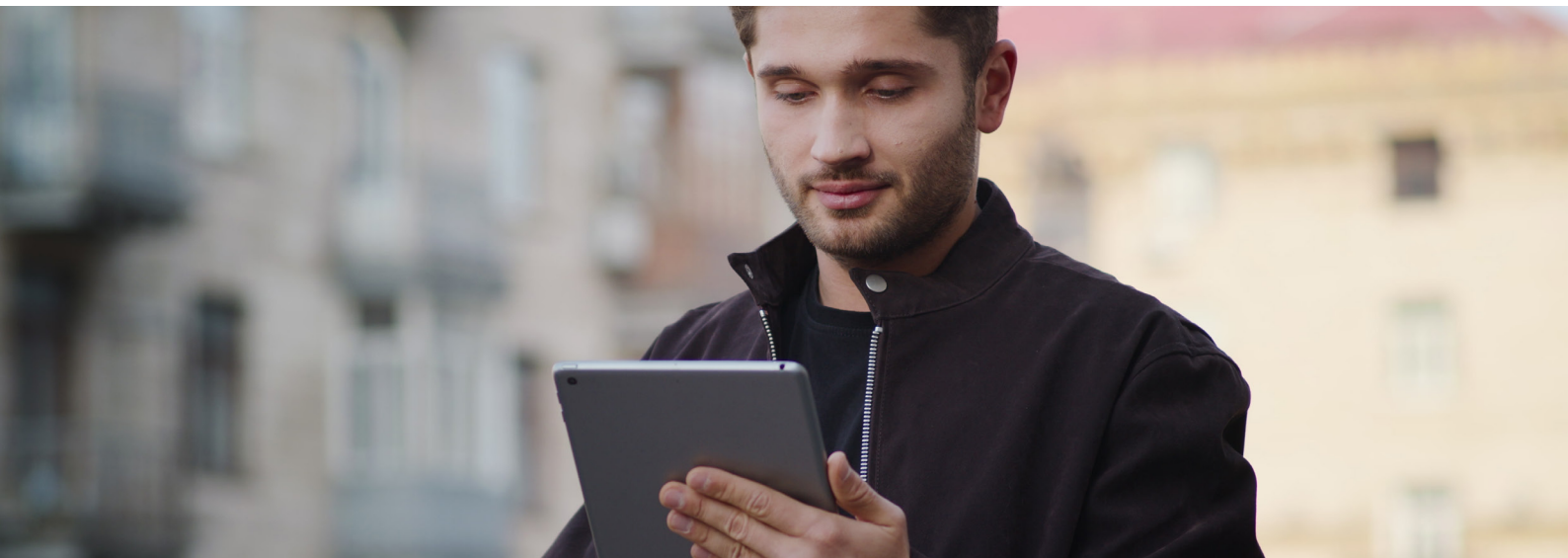


PRODUCT OVERVIEW

# OpenText Exceed TurboX 12.0.4

Delivers high performance remote desktop and remote apps for professional 2D and 3D applications, accelerates IT cost savings, supercharged collaboration, and high availability for access from anywhere and from any device.



**New universal client**



**Many Windows remote access improvements**



**Remote audio streaming**



**Scalability improvements**

**As many organizations look to consolidate data centers or to migrate to the cloud to reduce IT spending and increase central manageability, they also need to provide high performance, remote access to users of graphically demanding software on Linux®, Unix® and Microsoft® Windows®. This type of software, as well as other graphically demanding design and construction software, is what many organizations use to design their core products, such as semiconductors, engine parts or architecture. Organizations are looking for solutions that cover graphically demanding and standard business user desktops to enable the benefits of virtualization and access to anything from anywhere using any device.**

The latest version of OpenText™ Exceed™ TurboX 12.0.4 includes a new universal client that allows access from anywhere using any device, many improvements for Windows remote apps and remote desktops, remote audio streaming, scalability improvements and a lot more.

Exceed TurboX (ETX) is an advanced solution for desktop virtualization and cloud remote access to graphically demanding applications, such as CAD, EDA, and many others, including X Window applications hosted on UNIX and Linux servers and Windows applications hosted on Windows servers. Exceed TurboX is an excellent platform for cloud remote access and works nicely with cloud services like Microsoft Azure, Amazon AWS, and Google Cloud.

Exceed TurboX provides high performance over long-distance and low-bandwidth data connections. It provides a central location for IT to securely deploy applications running on a variety of server platforms to a managed list of users, reducing costs by consolidating applications into the cloud or into a single, or very few, global data centers with minimal disruption to the business.

Exceed TurboX provides high security on many levels to protect intellectual property from internal and external attacks. Keeping core product design applications in a central location ensures there is no physical unauthorized access. Strong encryption is used for the data traffic between the client browser and the ETX web server, as well for the screen content stream between an application server and the client.

Users have many platform choices for remote access to their graphically demanding solutions. Exceed TurboX can be used on Windows, Mac, Linux, Android tablets or iPad. These platforms are significantly more cost-effective than commissioning high-end graphics Linux/Unix workstations to every user.

## **New universal client**

Access your remote desktops and remote apps from any device using the new Exceed TurboX 12.0.4 (ETX) HTML5 client. Your remote desktop or remote app can now run in any browser. Just click on an app or desktop on your ETX dashboard and it opens in a new browser tab. The new universal client offers a truly fast remote desktop experience. Now administrators and users can define what client should be used including the option to ask for what client should be used, native or web, for launching the remote session.

Use ETX remote access with any desktop browser, tablet browser or smartphone browser. No additional software is required or will be downloaded and installed.

## **Many Windows remote access improvements**

The Windows Direct remote access protocol has received significant performance improvements so demanding graphical applications offer fantastic remote access usability. Also, the Windows Direct protocol now can publish applications additional to entire remote desktops. Publishing applications opens the remote application on the client as if it were a local application.

ETX Windows nodes (application servers) now support multiple GPUs including load balancing between multiple GPUs for optimum rendering performance for concurrent users.

## **Remote audio streaming**

New with ETX 12.0.4 is remote audio streaming. Audio that plays on the remote host is now streamed to the client. This comes very handy for notification sounds, IP telephony, videos, and any other sound related applications.

## **Scalability improvements**

Improve your remote access scalability using a popular web access management (WAM) solution. Organizations can now use the Broadcom Siteminder WAM solution for single-sign-on to Exceed TurboX. Additionally, Siteminder can be a proxy that allows direct web access to ETX without having to use a VPN. The load balancing features of Siteminder can distribute the remote access user load between available ETX servers.

## Advanced Micro Devices

Advanced Micro Devices empowers global engineering teams with remote access solution

U.S. semiconductor company increases productivity and saves money with OpenText Exceed TurboX for high-performance remote access to graphic-intensive applications.

So far, based on testing and feedback, we've seen up to a 30% improvement in production and productivity on certain projects, due to the performance and stability of OpenText Exceed TurboX.

Rabih Mneimneh,  
IT Manager,  
Global Virtualization and  
Remote Computing,  
Advanced Micro Devices

[Read the Success story](#)

Organizations all over the world use Exceed TurboX for its reliability and ability to preserve sessions over client disconnects. Exceed TurboX excels when it comes to cloud remote access i.e., performance over WAN, giving remote users local-like performance. Exceed TurboX is a cloud-enabler for professional graphical applications that require high image quality via a remote desktop. High performance enables data center consolidation, or cloud migration which save cost, while the security features of Exceed TurboX ensure IP is always protected, no matter where the IT infrastructure is hosted, on-prem, in one or multiple datacenters, or in the cloud.

## Related Professional Services

- Installation Services

### New features of Exceed TurboX 12.0.4

<b>New universal HTML5 client</b>	<ul style="list-style-type: none"><li>• Use any browser on any platform to access remote desktops and remote apps managed by Exceed TurboX.</li></ul>
<b>Windows Direct protocol</b>	<ul style="list-style-type: none"><li>• Improved performance for blazing fast remote access.</li><li>• Published applications, remote access to just the application, not the surrounding remote desktop.</li></ul>
<b>Windows node enhancements</b>	<ul style="list-style-type: none"><li>• Support for multiple GPUs per Windows node.</li><li>• Load balancing between multiple GPUs on a Windows node</li></ul>
<b>Audio enhancements</b>	<ul style="list-style-type: none"><li>• Remote audio is streamed to the client (native clients only).</li></ul>
<b>Scalability enhancements</b>	<ul style="list-style-type: none"><li>• Support for Broadcom Siteminder web access management. Single-sign-on, proxy and load management.</li></ul>
<b>ARM Linux ARM MacOS</b>	<ul style="list-style-type: none"><li>• ETX node now available for ARM64 Linux</li><li>• ETX client for ARM64 Linux available since ETX 12.0.2</li><li>• Added MacOS ARM client</li></ul>
<b>Collaboration</b>	<ul style="list-style-type: none"><li>• New view only session sharing mode</li><li>• Take over session with different credentials</li></ul>

## New features of Exceed TurboX 12.0.4

<b>Web dashboard enhancements</b>	<ul style="list-style-type: none"><li>• Customizable column list for all grid views in user dashboard and server manager</li><li>• A user can be assigned to all groups with a single click</li><li>• Reset profile to default</li><li>• Select node for session</li><li>• Xstart su and execve options</li></ul>
<b>Internal database</b>	<ul style="list-style-type: none"><li>• Query performance improvements</li></ul>
<b>Collaboration enhancements</b>	<ul style="list-style-type: none"><li>• View only session sharing mode</li><li>• Take over session with different credentials</li></ul>
<b>Language support</b>	<ul style="list-style-type: none"><li>• Japanese UI now available</li></ul>

## Supported platforms

### ETX Server

- Red Hat® Enterprise Linux® 6.10 or later, 64-bit
- CentOS® 6.10 or later, 64-bit
- Oracle® Solaris® SPARC® 11.3 or later, 64-bit
- Oracle Solaris x86-64 11.3 or later, 64-bit
- SUSE® Linux Enterprise Server 12 or later, 64-bit

### Connection Node

- Oracle Solaris SPARC 10 U13 or later, 64-bit
- Oracle Solaris x86-64 10 U13 or later, 64-bit
- Red Hat Enterprise Linux 6.10 or later, 64-bit
- SUSE® Linux Enterprise Server 11.4 or later, 64-bit
- CentOS 6.10 or later, 64-bit
- Ubuntu 20.4 or later on ARM Linux 64-bit
- IBM AIX® 7.1 TL5 or later, 64-bit
- Windows 8.1 and Windows 10, 64-bit
- Windows Server® 2012 R2, 2016 and 2019, 64-bit

### Client

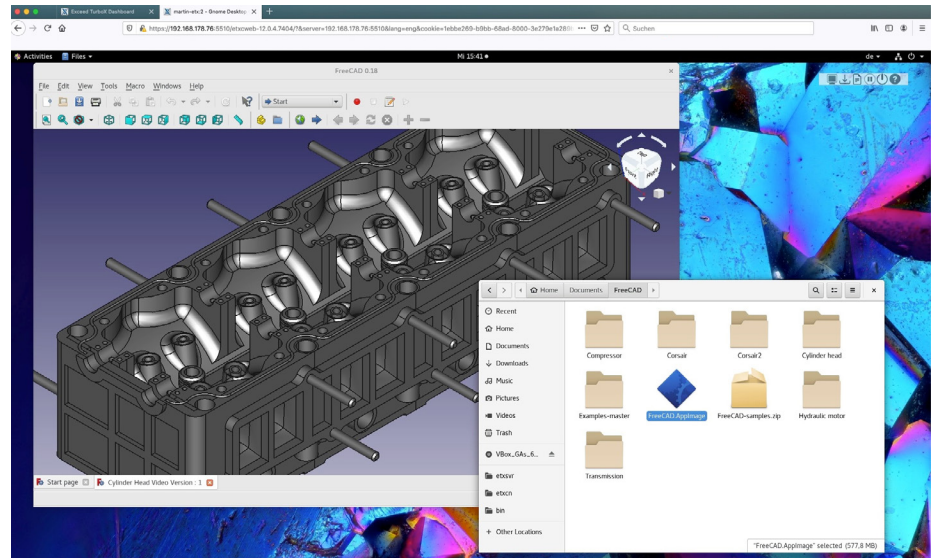
- Windows 8.1 and Windows 10, 64-bit
- Windows Server® 2012 R2, 2016 and 2019, 64-bit
- Red Hat Enterprise Linux 6.10 or later, 64-bit
- CentOS 6.10 or later, 64-bit
- Ubuntu 20.4 or later on ARM Linux 64-bit
- MacOS™ 10.14 (Mojave) or later
- iPadOS 14 or later
- Android OS 10 or later

[Learn more](#)

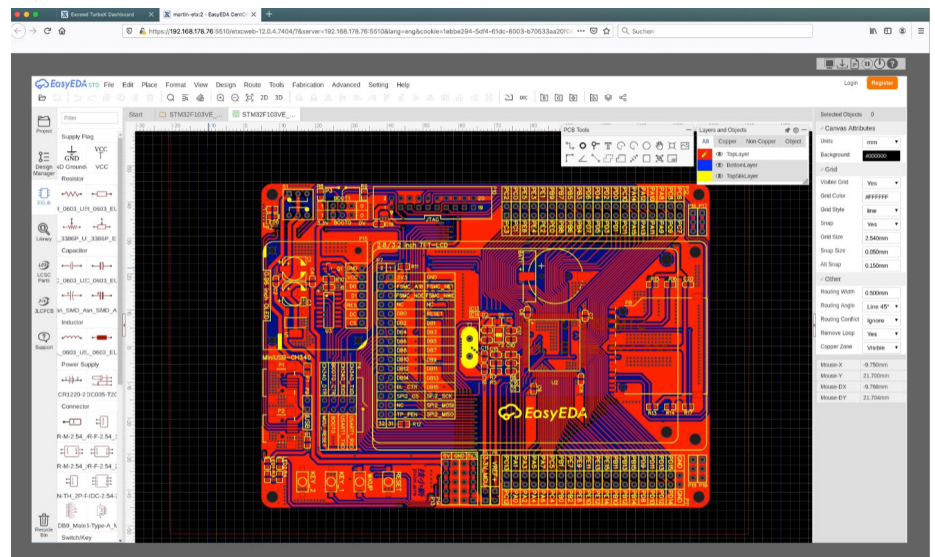
[Download the trial](#)

## Web Browsers

- Microsoft Edge®
- Mozilla Firefox®
- Google Chrome™
- Safari®



The new ETX HTML5 client showing access to a Linux remote desktop.



Application only mode (multi-window mode) with the new ETX HTML5 client

## About OpenText

OpenText, The Information Company, enables organizations to gain insight through market leading information management solutions, on-premises or in the cloud. For more information about OpenText (NASDAQ: OTEX, TSX: OTEX) visit: [opentext.com](https://www.opentext.com).

## Connect with us:

- [OpenText CEO Mark Barrenechea's blog](#)
- [Twitter](#) | [LinkedIn](#)